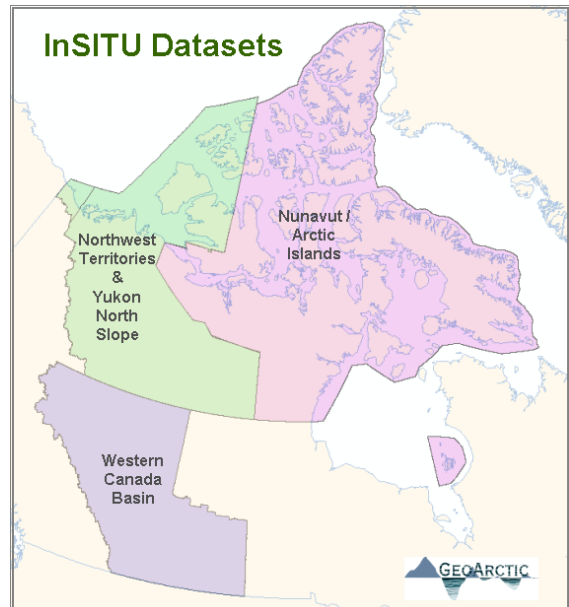


InSITU[®]

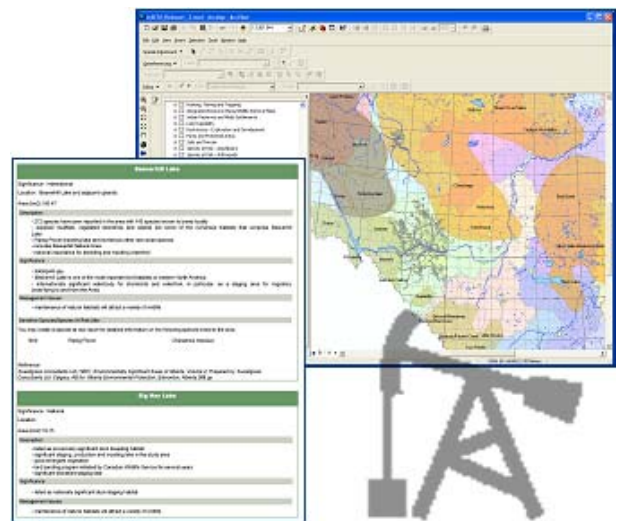
Environmental Data Management Service

GeoArctic have provided environmental and geoscience data management services to the natural resource industry in western and northern Canada since 1996. Our InSITU[®] environmental data management service saves the time, cost and staff resources required to compile and manage base environmental datasets. Set-backs, regulations, restrictions and species status are linked to over 100 environmental layers including sensitive and species at risk distributions, land use and integrated resource plans. Our InSITU[®] environmental datasets and are now available for:

1. Western Canada Basin (Alberta, S Saskatchewan & NE British Columbia)
2. Yukon and Northwest Territories (Mackenzie Delta, Mackenzie Valley & Yukon North Slope)
3. Nunavut & the Arctic Islands



The InSITU environmental data management service is available as a personal geodatabase version or enterprise geodatabase version for ArcSDE. The subscription service includes regular data updates and our reporting tools for ArcMap include information on environmental restrictions, aboriginal engagement, species at risk status, etc. Full metadata and symbology are provided with each dataset.



Bridget Ady
GeoArctic Ltd
308 – 11 Street NW
Calgary AB. T2N 1X1

(403) 290 1320
bady@geoarctic.com



Visit www.geoarctic.com for detailed information about the InSITU product.

Copyright © GeoArctic Ltd, 2008